

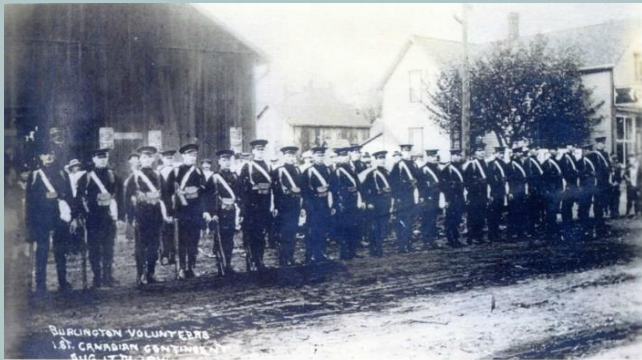
Freeman Dispatch

Official Newsletter for Friends of Freeman Station - August 2020 Edition



Rumour has it that Ingersoll Station, former Grand Trunk station, built in 1886 by the Great Western, abandoned since 1979 will be torn down in the upcoming days. Ingersoll is near London Ontario.

Even though Freeman Station is closed due to COVID 19 - we are always interested in receiving stories, maps, old photographs, artifacts, and volunteers. If you would like to have some fun and contribute to our community, please consider joining our organization. No experience is necessary and there are no paid positions, but we can always use people with professional expertise in construction and administration. There are roles as visitor guides and in gift shop sales, as well as normal maintenance jobs like painting and cleaning. Model train enthusiasts may be able to help in our diorama.



These soldiers marched from the Lakeshore up to Freeman Station on August 17 1914 on their way to Europe and The Great War.

Burlington Volunteers of 1st Canadian Contingent
It was only two weeks after war was declared.

Reminder to everyone to Wear Your Mask



follow Freeman Station on : twitter
facebook
instagram
email

@FreemanStation
@FreemanStation
@fofs_burlington
info@freemanStation.ca